

The Importance of Being Earnest

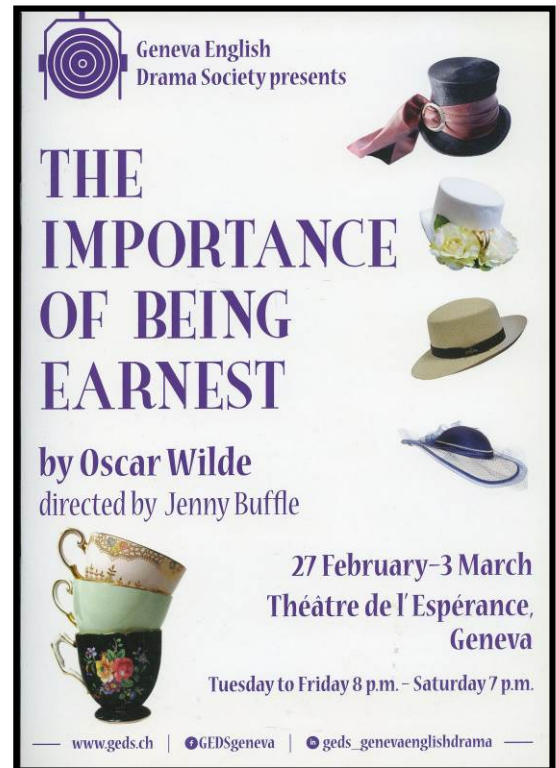
February/March 2018

Cast:

Algernon Moncrief - Christopher Walters
Lane - Stuart Hartley
John Worthing - Angus MacDonald
Lady Bracknell - Frances Favre
Gwendolen Fairfax - Gillian Barmes
Miss Prism - Mary Stuttard
Cecily Cardew - Emily Boyle
Rev. Canon Chasuble - Tim Goodyear
Merriman - Martin Walthall

Technical and Production Staff:

Director – Jenny Buffle
Stage manager - Richard Brown
Assistant stage manager - Ruprecht Simon
Production assistant - Christina Vasala Kokkinaki
Set design - Jenny Buffle
Set construction - John Douglas (lead), Brian Allardyce, Howard Hornfeld, Bill Lloyd, Neil-Jon Morphy, Michael Smith, Roger Williams
Lighting - Steven Toynbee (lead), John Newsome, Tim Hancox, Christos Panagiotou, Vinodh Kumar Venkatesan
Sound - Rick Vincent (lead), Christos Panagiotou
Prompt - Wendy Gray
Stage crew - Susana Alvarez, Arianna Brambilla, Barrie Duggan, Joanne Gower, Nina Graifemberg, Noemi Manco
Props - Nathalie Stump
Truckie - Tim Hancox
Costumes - Liz Comstock-Smith
Costumes assistant - Geneva Holloman
Accessories - Christina Conti
Hair and make up - Jasmyne Granberg Cauchi (lead), Joy Waelchli, Madame



Mantuz, Christina Conti, Nina Graifemberg
Front of house - Lance Newhart
Poster design - Jenny Buffle, Sam Al-Hamdani
Production photography - Nathan Quintanilla, David Pittuck
Video - Brian Thomas
Programme - Christina Vasala Kokkinaki, Sam Al-Hamdani
Publicity - Tamaam Madi-Nassar, Rick Vincent, Viki Lazar
Box office coordinator - Neil-Jon Morphy
Ticket Sales - Theatre in English



Gillian Barmes, Angus MacDonald, Frances Favre. Christopher Walters



Christopher Walters



Angus MacDonald



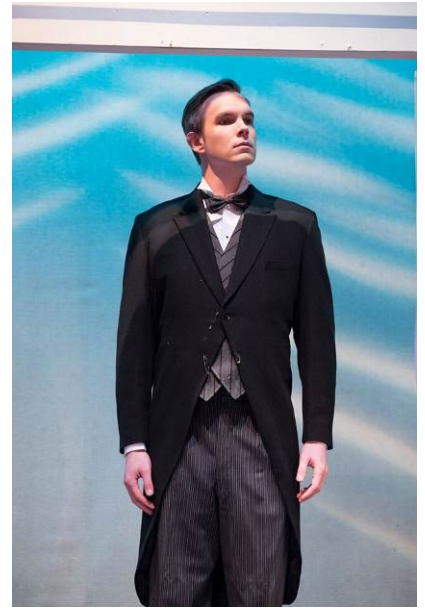
Frances Favre



Emily Boyle



Gillian Barmes



Stuart Hartley



Mary Stuttard



Tim Goodyear



Martin Walthall